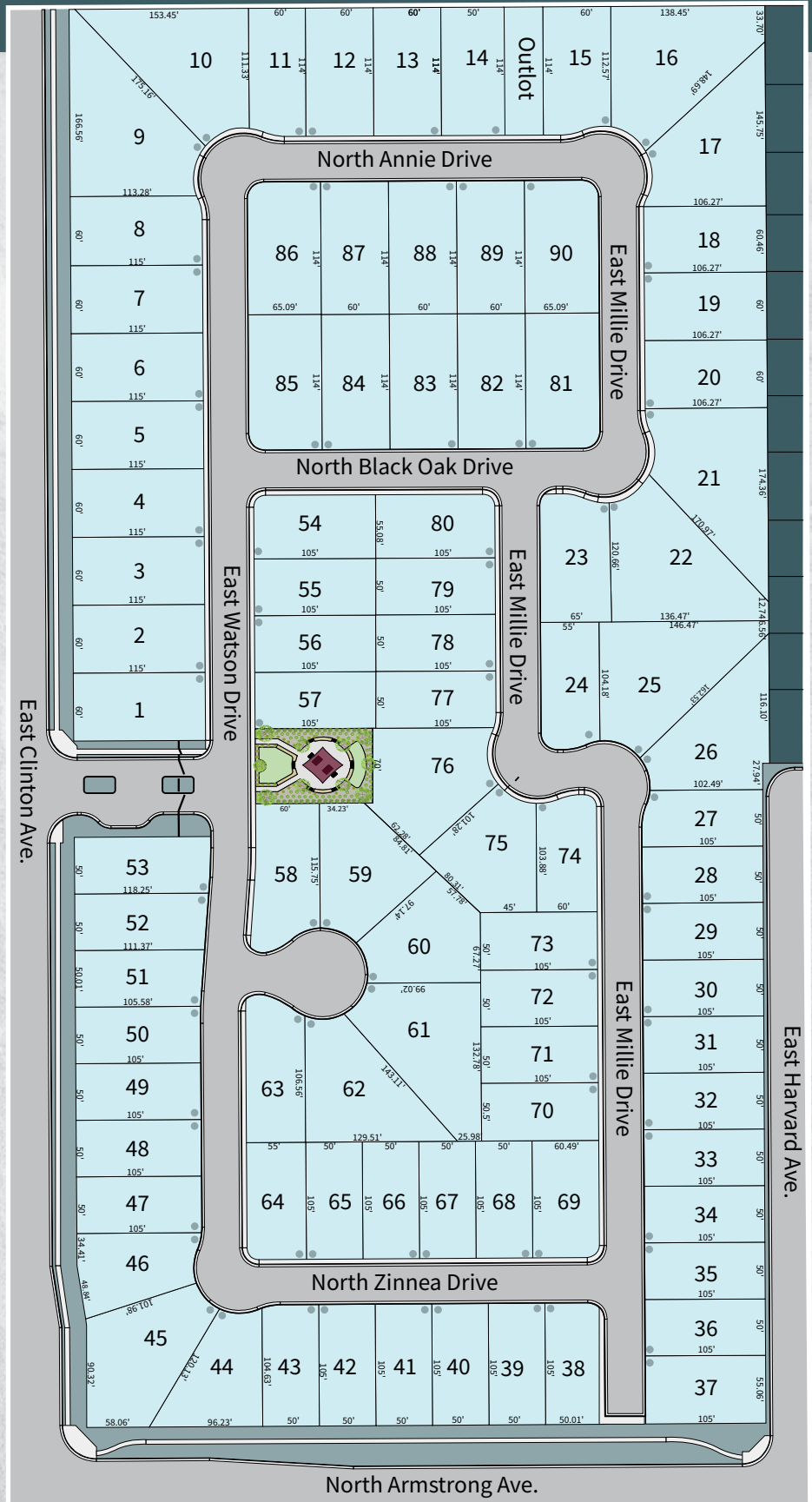


THE LANDING

AT BELTERRA

TRACT 6325

GATED LIVING COMMUNITY



GRANVILLE
HOMES

559.445.9000 | GVHomes.com

Granville® Homes reserves the right to alter prices, features, floor plans, elevations and availability at any time without notice or obligation. Model homes feature optional selections which may not be included in listed inventory homes. Floor plans for illustrative purposes only and may not reflect the options of each inventory home shown. Homes are equipped with a photovoltaic system (solar) with a 20-25 year lease the buyer will assume. Pricing will vary based on system size and production. Purchase option available. See agent for details on solar lease program and for most accurate and current information. Outdoor living area refers to patio and courtyards.



RE License # 01258537 Contractor License # 586845